

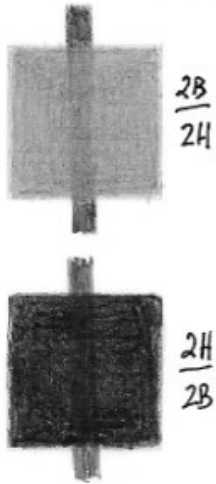
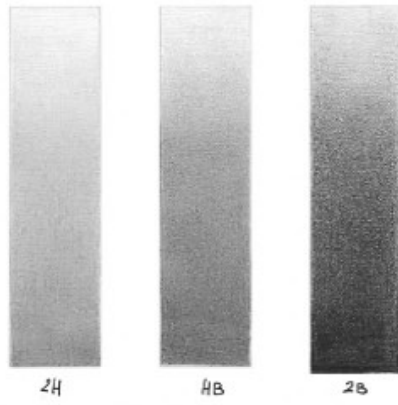
**PAGE 1**

This page can be used for many purposes, but was originally designed to explore the full range of grades of your pencil set. For an extensive set you might need additional sheets

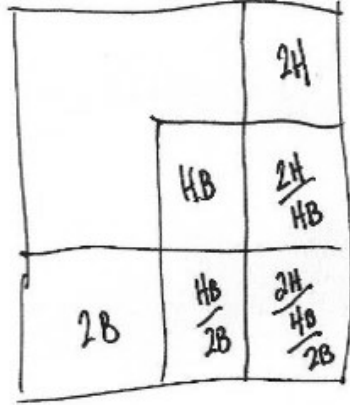
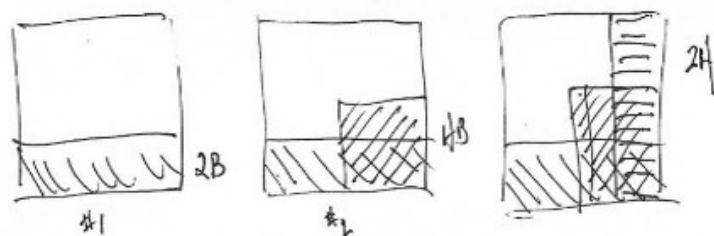
Shade across the boxes, and (if beginning at the dark end) gradually reduce the pressure as you progress. The aim is produce the darkest *usable* value at one end and to fade to white at the other, with smooth shading in between.

**PAGE 2**

Begin by selecting the 2H, HB and 2B pencils, since they are the ones used most frequently. In the top-left vertical boxes, create the three value gradients. Start with a heavy pressure and, progressing upward progressively decrease the pressure to fade to white.

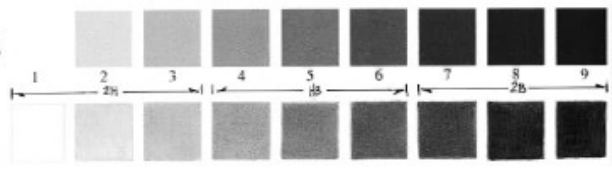


The central portion of the exercise shows a soft over hard and a hard over soft application. It demonstrates the "graphite resist" effect, where soft grades non-productively skate over hard grades. The lesson to be learned here is that hard graphite is always applied over soft.



This next exercise attempts to show how the three grades will play together. The images above and right explain the order that graphite is applied - obeying the hard over soft rule.

The top row features computer generated values for you to match in the lower row. Three grades will usually cover the entire range.

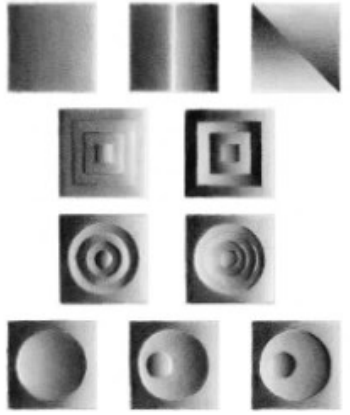


**PAGE 3**

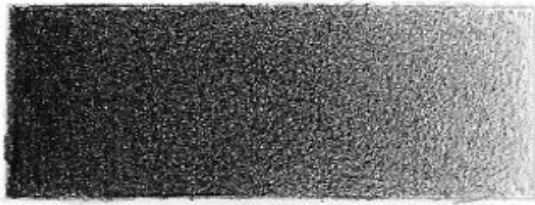
The Gradated Tone Exercise will test you and your pencils to the limit.

Follow the supplied plan to create every facet of every three-dimensional form you'll probably ever encounter.

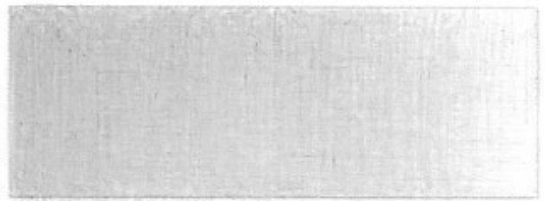
All drawn using a strong, direct light source.



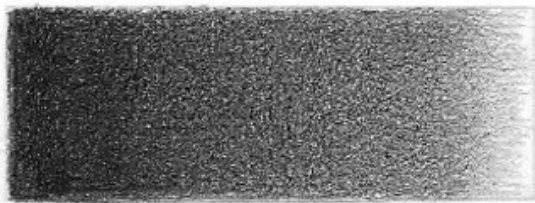
1



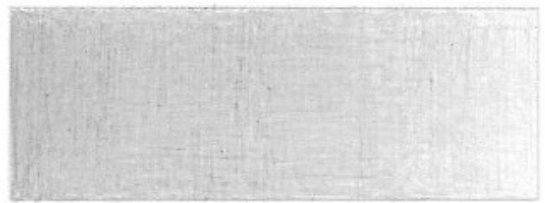
7B



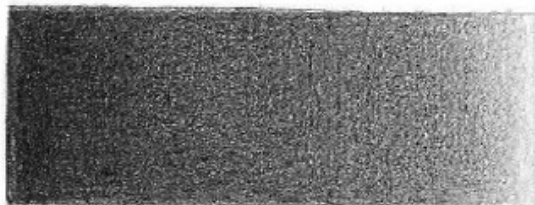
4H



4B



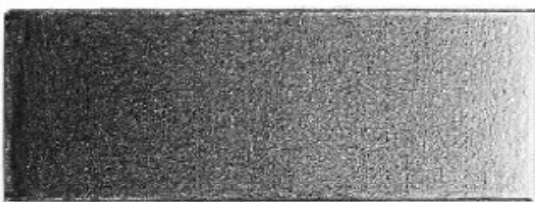
3H



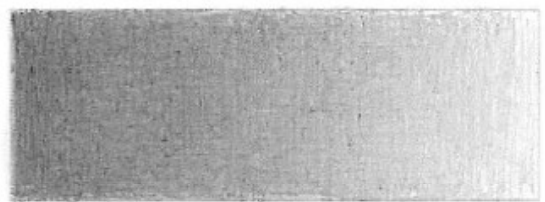
3B



2H



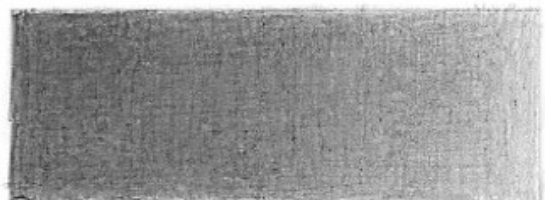
2B



H

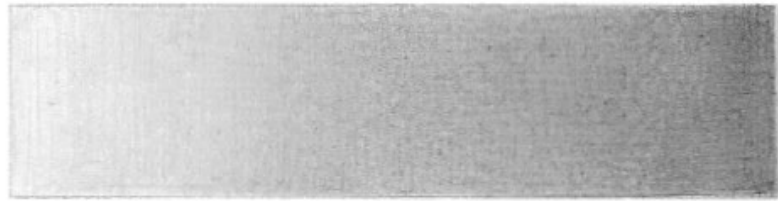


HB

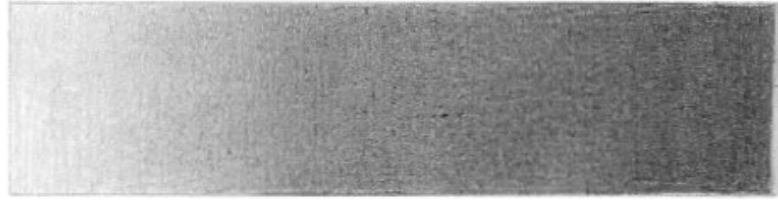


F

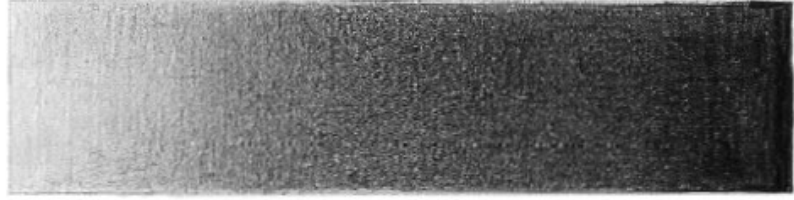
Gradients & Value Scale Exercises



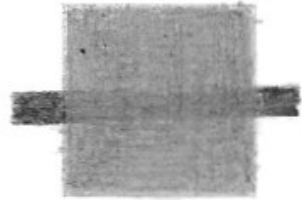
2H



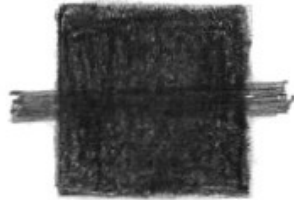
HB



2B



2B / 2H



2H / 2B

